

STIMU-LYX®

SOUTHEASTERN BRANDED SUPPLEMENT

STIMU-LYX® is a blend of molasses, solids, fat, protein, minerals and vitamins designed to supplement forages fed to animals for growth, production and performance.

Features and Benefits

Highly Palatable: The high level of molasses and fat make for a readily acceptable product animals will visit on a consistent basis.

Consistent Intake: The licking action along with saliva production only softens the top 1/4 inch of block allowing limited consumption. Once the top layer is consumed, animals must wait for the next layer to soften before consuming additional product. This process is unique to low-moisture blocks giving a product that cannot be bitten, chewed or over consumed.

Enhanced Digestive Function: Numerous visits to the blocks throughout the day ensures a slow, steady intake of nutrients, which improves the digestive environment and increases the utilization of forages. This licking action increases saliva production which further aids in digestion and minimizes digestive upsets.

Quality Ingredients: STIMU-LYX® products are made from high quality ingredients handled and maintained in a way to assure nutrient integrity.

Weather Resistant: Rain, snow or cold does not affect the composition. Moisture does not cause excess melting or softening of the products. Animals will lick any excess moisture off of the blocks.

Low cost per head, per day: It is not the ton cost that counts, but what it cost to feed cows on a daily basis. Low controlled daily intake of STIMU-LYX® assures you a cost effective supplement.

Formulated for Southern Forages: STIMU-LYX® Supplements were formulated with the unique nutrient composition of Southeastern forages in mind to assure a product to match your animals needs.

Low-Moisture: The manufacturing process reduces moisture to less than 4%. Competitive products can contain up to 25% moisture. This high moisture adds to freight and handling cost. With STIMU-LYX® you pay for nutrition, not water.

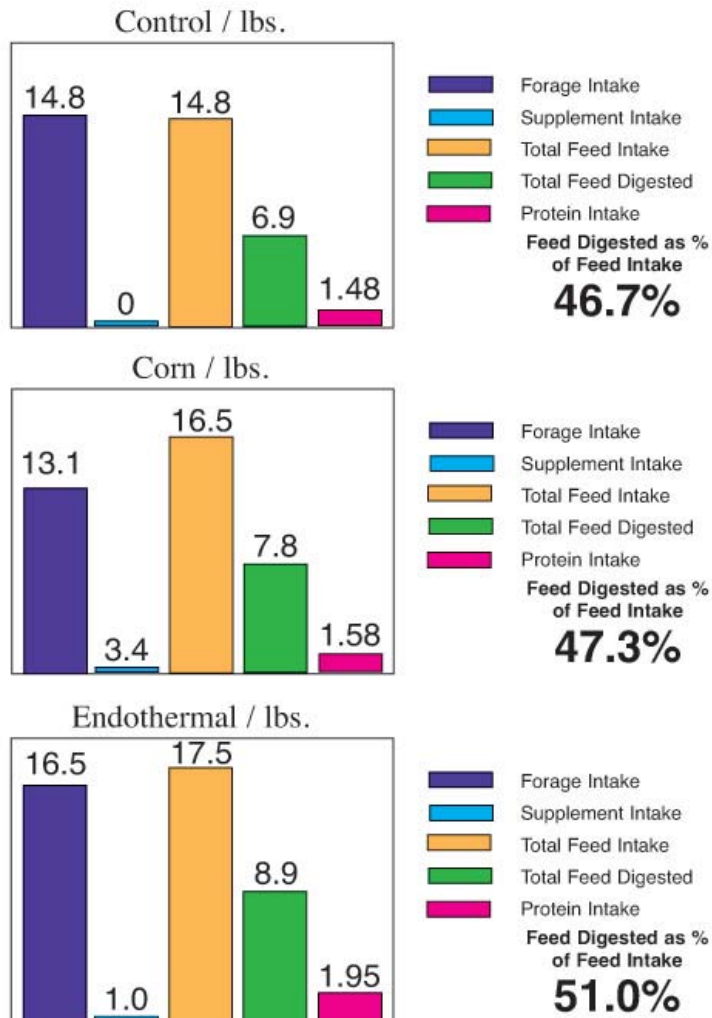
University Tested / Producer Approved

Numerous research trials at respected universities such as Purdue, Kansas State, and Oklahoma State has proven that low moisture supplement blocks will:

- **Improve Forage Digestion**
- **Maintain or Improve Body Condition**
- **Improve Pasture Management**
- **Increase Reproductive Performance**
- **Improve Growth Performance**

Research

Trials conducted at Kansas State University have shown Endothermal Tubs improve feed intake and digestion. Treatment Results:

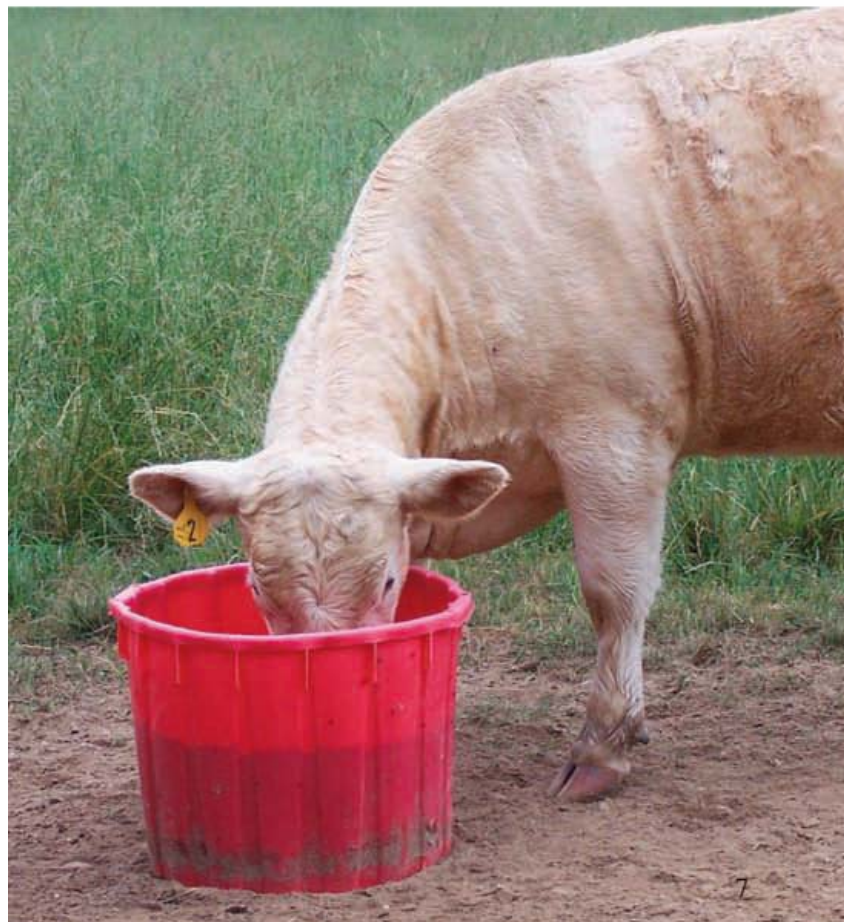


TEST RESULTS: Cattle consuming one pound of endothermal product per day will see an increase in forage intake over cattle consuming hay or hay supplemented with corn.

TEST RESULTS: Cattle consuming one pound of endothermal product per day will intake more protein per day than cattle consuming hay or hay supplemented with corn.

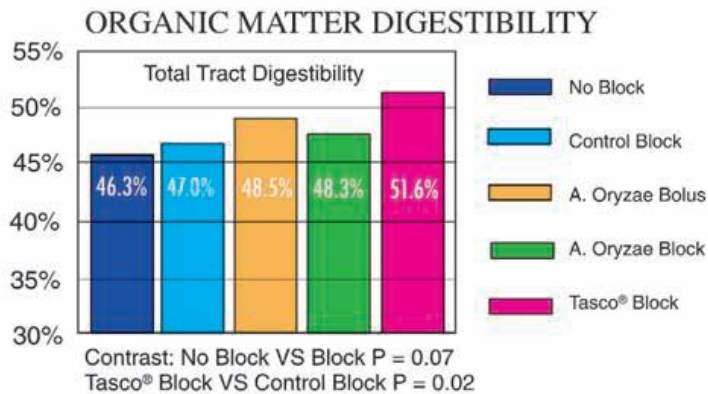
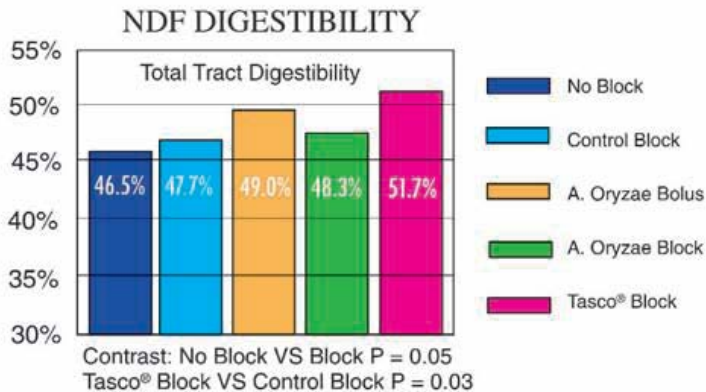
TEST RESULTS: Cattle consuming one pound of endothermal product per day will have an overall increase in forage digestibility over cattle consuming hay or hay supplemented with corn.

BOTTOM LINE: Cattle consuming endothermal product will see an increase in forage intake, forage digestibility and protein intake, meaning more nutrition for cattle to maintain body condition and increase reproductive performance.



TASCO® 35-CP HELPS IMPROVE FORAGE UTILIZATION

North Dakota State University research showed an improvement of 10% in fiber and organic matter digestibility when TASCO® is combined with a 35% Endothermal Tub. This helps improve the substantial benefits of supplemental protein by extracting more energy and nutrients from forage, in addition to increasing forage intake.



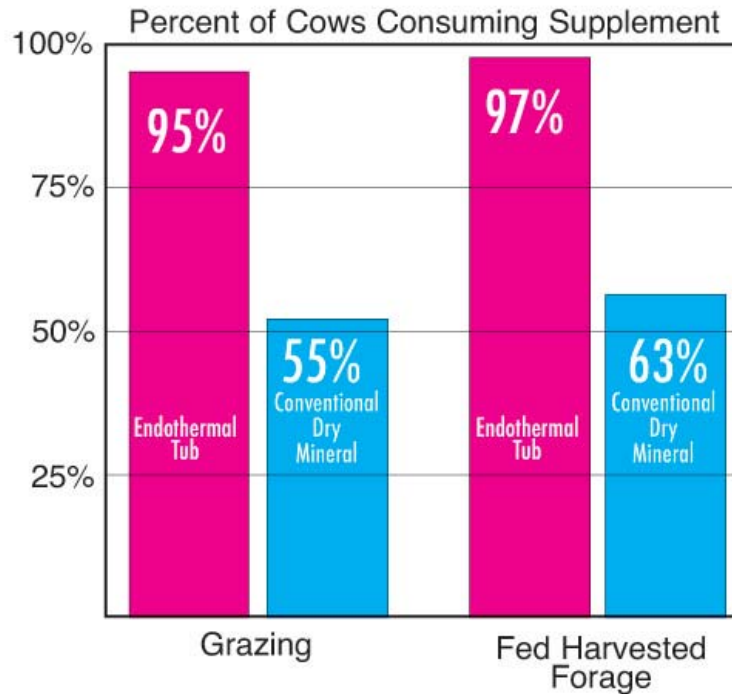
Economics of Increased Digestibility					
Cost of Hay/Ton	Hay Intake	10% Savings	Value of Savings	Cost of Tasco®	RIO
\$60	25 lb.	2.5 lb.	7.5¢	3.5¢	2.1
\$80	25 lb.	2.5 lb.	10.0¢	3.5¢	2.8
\$100	25 lb.	2.5 lb.	12.5¢	3.5¢	3.6

Calculated as a 0.7 lb. daily intake and a \$100/ton price premium for Tasco® inclusion in a block.

The economic advantages of a 10% increase in digestibility can be significant, as the chart demonstrates.

Percent of Cows Consuming Supplement

Montana State University conducted repeated trials to compare Endothermal supplements to dry mineral supplements.



TEST RESULTS: On average, over 90% of cattle will visit Endothermal Supplement Tub per day while an average of only 60% will visit conventional dry mineral.

BOTTOM LINE: Cattle find Endothermal Tubs more palatable and a larger percentage of your cattle will visit on a daily basis when compared to conventional dry mineral. This consistent increase of minerals and vitamins will improve reproductive performance in your cattle as well as increase overall immunity in your herd.